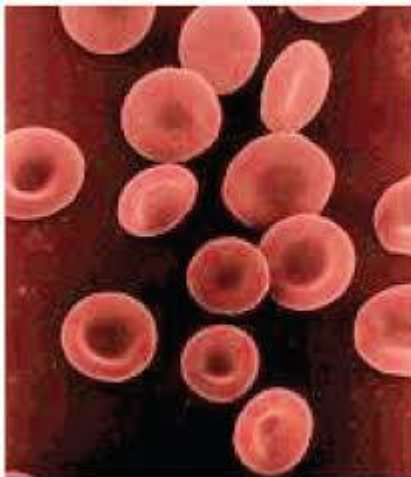


SHAPE OF CELLS

LAB.2

1-Round Shape: in RBCs ,lymphocytes and in tomato cells, shape of RBCs help them to flow through blood and protect them from pressure in the blood vessels .RBCs in Birds are different from humans, having nucleus in RBCs

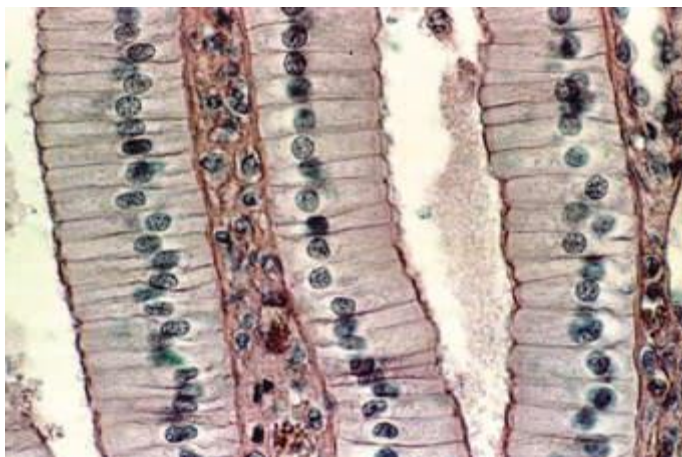


RBCs in human
(without nucleus)

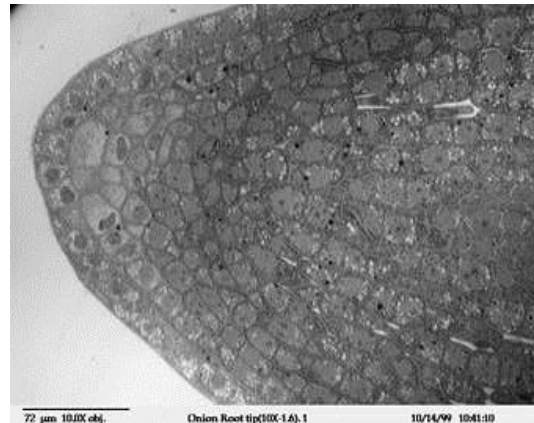


RBCs in birds
(with nucleus)

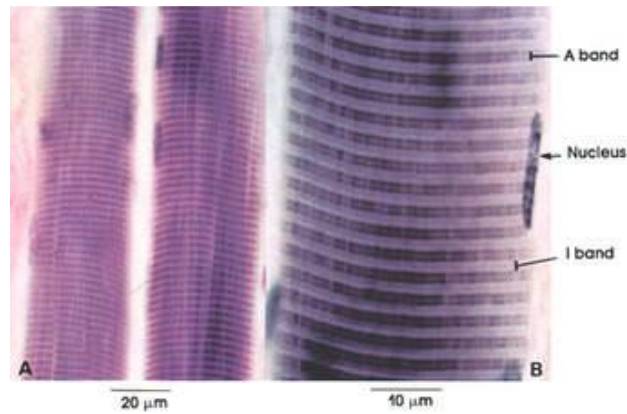
2-Rectangular shape: in columnar epithelial tissue and in layer in palisade *Ficus elastica*



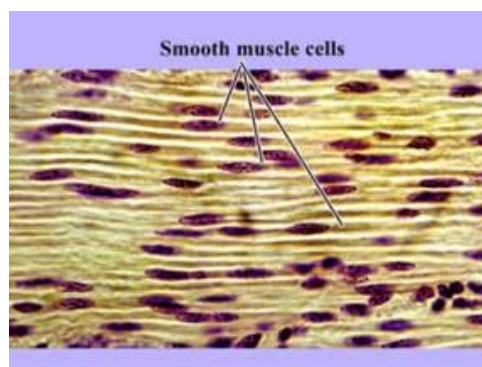
3_ cubic shape : in cuboidal epithelial tissues and in meristematic tissue region in allium root tip



4_ Filiform shape : in striated muscle and in oleo leaf fiber shape of the muscle fibers help in muscle contraction .



5_ Spindle shape: in smooth muscles and in fiber in *vitis*.



6_stellete shape : in nerve cell and in parenchyma tissue of *canna indica* leaf . shape of neuron helps it to transport signals .

