

The Routes Of Drug Administration

by:

M.Sc. Nibras Jamal

M.Sc. Nada Sahib

Handling Lab mice

Environment

- **Caging**
- **Feed**
- **Bedding**
- **Water**
- **Sanitation**
- **Provisions for off-hour care**
- **Environmental monitoring and maintenance**

Table 1.0.1 Minimum Space Requirements for Housing Laboratory Animals in Cages^a

Animal	Weight	Floor area/animal		Cage height ^b	
	(g)	(in ²)	(cm ²)	(in)	(cm)
Mouse	<10	6.0	38.71	5	12.70
	10-15	8.0	51.62	5	12.70
	15-25	12.0	77.42	5	12.70
	>25	15.0	96.78	5	12.70
Rat	<100	17.0	109.68	7	17.78
	100-200	23.0	148.40	7	17.78
	200-300	29.0	187.11	7	17.78
	300-400	40.0	258.08	7	17.78
	400-500	60.0	387.12	7	17.78
	>500	70.0	451.64	7	17.78

a Guidelines are derived from Guide for the Care and Use of Laboratory Animals (ILAR, 1985). *b* From the resting floor to the cage top

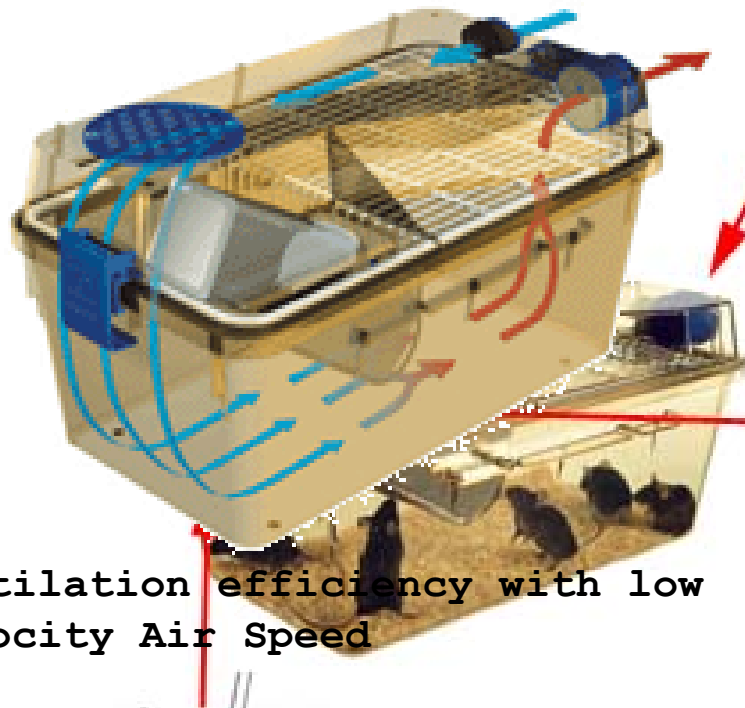
From Current Protocols in Immunology Online

High-quality cages

INDIVIDUALLY VENTILATED
CAGES

laminar air rack





Ventilation efficiency with low velocity Air Speed

Self-closing Supply: containment integral diffusion into each c
A cage pre-filter on dander out of plenu intervals.



Visibility

The integral bottle depression accommodates an external water bottle replaceable without removing the cage from the rack and within the overall IVC rack footprint minimising cage opening frequency. With extensive use this feature offers a significant decrease in labour and reduced exposure to/release of contamination during changing.



ould
ne quick
isure
seal
cover
e; they
ndly
over

Easy access

From TENCIPLAST

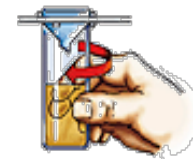
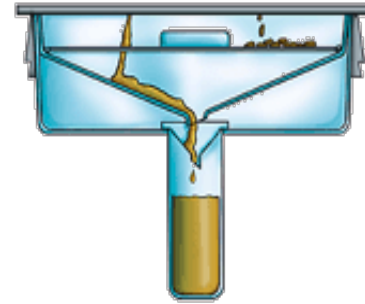


Metabolic and Diuresis Cages

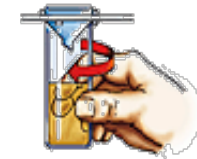
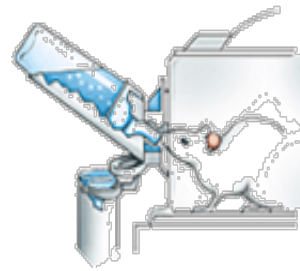
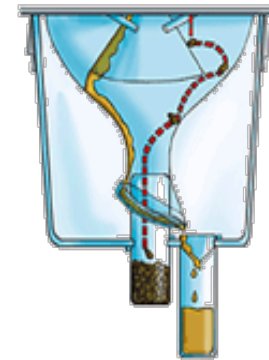
From TENCIPLAST



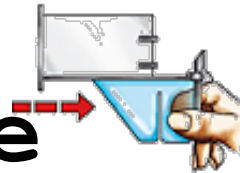
Diuresis cage



From TENCIPLAST



Metabolic cage



From TENCIPLAST



Refrigerated Collection Rack

From TENCIPLAST